

# SOMERSHAM COMMUNITY PLAN

## AN UPDATE ON PROGRESS

SEPTEMBER 2014



## VISION FOR SOMERSHAM

“A sustainable community striving to involve and meet the needs of all our residents”

*A 10 point plan for Somersham.*

- 1/ Improve information and communication
- 2/ a clean and tidy village
- 3/ Enhance road safety
- 4/ Review public transport opportunities
- 5/ Improve and promote local facilities
- 6/ Encourage community involvement and self sufficiency
- 7/ Encourage opportunities for improved Health and Well-being
- 8/ Help promote the use of local shops and businesses
- 9/ Support limited housing development with appropriate community benefit
- 10/ Encourage energy efficiency and environmental sustainability



NESTA

Making  
Innovation  
Flourish



Cambridgeshire ACRE



## HEALTH AND WELLBEING

The responsibility for Public Health is moving from the NHS to local authorities and from 2013 will be administered locally by the Cambridgeshire Health and Wellbeing Board.

All aspects of our everyday life have an impact on our health and wellbeing, from health services through to housing, employment, education, transport and community activities. Health problems can cause personal misery and are also costly to deal with. This means that working to improve community health and wellbeing, whilst respecting peoples' personal lifestyle choices, is everybody's business and in everybody's interest.

The Somersham Community Plan can start to benefit local residents by identifying three key aims;

- Using local information, evidence and advice by working with our GP practices.
- Focusing on preventing health problems by encouraging healthy lifestyles.
- Emphasising local responsibility and developing local solutions.

Currently, notable areas of concern are;

1/ The increase in obesity and diabetes

2/ Older people unable to maintain their independence

Possible actions are;

- Walk to school campaigns to encourage exercise. Organise a 'walking bus'.
- Safer cycle routes.
- Local exercise provision – equipment, areas, trim trails, activities for all ages.
- Increase dietary advice in schools and elsewhere.
- Support for older people through Time Banking and voluntary groups.



NESTA

Making  
Innovation  
Flourish



Cambridgeshire ACRE



## Health & Well-Being Plan

Area of Concern	Using local information, evidence and advice (including working with GP Practices)	Focusing on preventing health problems by encouraging healthy lifestyles	Emphasising local responsibility and developing local solutions	ACTION TAKEN
<b>OBESITY &amp; DIABETES</b>	<p>Promotion of national Change4Life campaign via village websites, village events and at Community Plan Launch</p> <p>Provision of walking &amp; green spaces maps as part of village newsletter and websites</p>	<p>Development of Wild Play sessions for children, linking with Children Centre</p> <p>Are schools a 'Health Promoting School'</p> <p>Developing and promoting community orchard, involving children in food production</p> <p>Provision of Play Equipment and Outdoor Gym Sessions for adults</p>	<p>Providing formal walking training via Health Walks Scheme</p> <p>Seeking resources to promote safer routes to schools</p> <p>Strengthening the use of the Nature Reserve for informal physical activity activities</p> <p>Exploring potential for developing a community allotment</p> <p>Exploring potential for developing safe cycle ways both within the village, and to connect with other areas</p> <p>Exploring the potential for developing a 'farmers market' approach to provision of local food</p>	<p>Engaging with the school &amp; children's centre on health activities</p> <p>Health &amp; Well-being Group linking Health visitors &amp; Public Health professionals to local initiatives</p> <p>Contact made with local surgery Patients Participation Groups</p> <p>Contact made with local youth clubs, groups and organisations</p> <p>Nature Reserve maps available on parish council website</p> <p>Supervised 'wild play' sessions made available for children in the Local Nature Reserve (LNR)</p> <p>Funding currently being sought for 'Trim Bahn' equipment</p> <p>Organised community orchard sessions up &amp; running</p>

<p><b>OLDER PEOPLE – maintaining independent living</b></p>	<p>Accessing community ‘cooking’ resources and experiences to build recipe collection on village website</p> <p>Promotion of ‘How to Keep Well and Warm in Winter’ via village newsletter and website</p> <p>Promotion of advice on how to prevent falls via village newsletter and website</p> <p>Together with GP Practices, promote uptake of flu vaccination</p>	<p>Development of Wild Play sessions for older adults/Grandparents</p> <p>Development of gardening programme for residents of Windsor Court</p> <p>Right Start physical activity programme – pilot; this to include a falls prevention element</p> <p>Explore links with CCC Community Navigator Scheme</p> <p>Explore feasibility of ‘carry on cooking’</p>	<p>Time Bank provision – encouraging older people to also contribute</p> <p>Promotion of Nature Reserve to residents of Windsor Court</p>	<p>Time Bank reducing isolation through social activity &amp; providing transport</p> <p>Community Navigators trained</p> <p>Health &amp; Well-being Group linking service providers</p> <p>Regular articles in Somersham4u newsletter and community website on personal safety, trading standards, energy efficiency &amp; health issues</p>
---	--	--	---	---

## Environmental Well-Being

Issue Identified	Community Comments	Potential Action	ACTION TAKEN
<p><b>More information is needed about open spaces (e.g. the Lake) and community groups.</b></p>	<ul style="list-style-type: none"> <li>• All the open spaces should be better advertised within the village – even local people are not aware of their existence</li> <li>• Is there still a dial and ride? I don't know a lot of what happens in the village.</li> <li>• Could use whiteboards, posters, painted walls, school newsletters, email, Facebook, website, Voices and Library</li> <li>• Badly need an events diary</li> <li>• More publicity desperately needed for the lake area</li> <li>• School visits by community group</li> </ul>	<p>A group's directory established on Somersham4u. Who will be responsible for updating it?</p>	<p>A residents pack is being compiled which will provide this information. The pack will be available on the parish council website &amp; in the library</p> <p>The LNR (which includes the lake area) is extensively promoted by Somersham Nature Reserve Group (SNRG) via Facebook &amp;</p>

	<ul style="list-style-type: none"> <li>• Somehow get more people to read Voices, get all groups to contribute to it</li> <li>• Hattie's sign is wonderful – it needs a little plaque to tell people who Hattie was and how the sign came about</li> <li>• Merge LNR and LWP?</li> <li>• Village notice board (at The Cross?) would need to be vandal proof</li> </ul>		<p>Somersham4u website &amp; newsletter &amp; County Council websites</p> <p>Use of the LNR by creating a Walking Group &amp; supporting/promoting SNRG with their activities such as the Orchard planting &amp; Apple Day</p> <p>Increase physical activity through the Walking Group</p> <p>SNRG are in contact with other local Reserves to share experiences/resources</p> <p>Funding is being sought for presentation boards at the LNR</p> <p>The current LNR 5 year management plan has recently been endorsed by an SNRG community</p>
--	---	--	--



NESTA

Making Innovation Flourish



Cambridgeshire ACRE



			<p>questionnaire.</p> <p>The Lake working party &amp; SNRG are working in unison</p> <p>Purchase of an additional plaque to tell people who Hattie was and how the 'Hattie's map' sign came about has been approved.</p>
		<p>Create an online diary and individual/body to be responsible for administration. Somersham4u?</p>	<p>Parish Council notice boards are up &amp; running</p> <p>A community notice board has been installed by the Public Shelter at The Cross.</p> <p>Somersham4u community website has an online diary but work to engage the community with this is on-going</p>



		Reconsider the administration and moderation of Somersham4u	Somersham4u is administered and moderated by the parish council office.
		Promote the Lake & Nature Reserve – Somersham Nature Reserve Group	
		Conduct signage audit of village. Somersham Parish Council	
		Inform community about the background to Hattie's' Map through somersham4u website and Somersham-pc.gov.uk using the original 'Voices Newsletter' article.	

Issue Identified	Community Comments	Potential Actions	ACTION TAKEN
<p><b>Suggestions on improving the Lake/Local Nature Reserve</b></p>	<ul style="list-style-type: none"> <li>• Bird hide and more bird boxes.</li> <li>• More tree planting and pruning</li> <li>• More lighting around lake and police being visible in evenings and move potential intimidating youths on</li> <li>• More litter and dog fouling control including more bins</li> <li>• More hard paths for prams and wheelchairs, Boardwalk in wooded area behind lake</li> <li>• Make sure footpaths are clearly marked</li> <li>• More water and bigger fish in lake for fishing and possibly have a pump</li> <li>• Extend nature reserve to encompass sheep fields near quarry workings so have a more circular walk</li> <li>• Bin and seats in Station Land (dog walking field)</li> <li>• More wild flowers near lake, increase disable access to lake</li> <li>• Remove by-law notice, promote more of what it has there, reduce vandalism around lake and Station Land, better dog proof fencing to protect sheep</li> <li>• More seats and shingle laid down</li> </ul>	<ul style="list-style-type: none"> <li>• By Somersham Parish Council and community groups such as Somersham Local Nature Reserve Group (SNRG)</li> <li>• Bylaw notices have to remain in place to inform the public of the bylaws existence</li> <li>• Dog owners are responsible to keep their dogs under control and away from livestock at all times, it is not the farmers responsibility</li> </ul>	<p>Current funding bids have been submitted for an additional storage container, pedestrian mower, litter bins, new seats &amp; improved fencing.</p> <p>Additional dog fouling awareness posters installed</p> <p>Reserve wardens appointed to monitor the LNR &amp; to provide instant on-the-ground advice &amp; information on activities</p> <p>Funding bid in to repair lake area footway, to improve drainage to existing footways &amp; to improve wheelchair access</p>

<b>Thoughts on boosting the nature areas within the village</b>	on muddy areas <ul style="list-style-type: none"><li>• More flower displays, shrubs, plants and bulbs put around village to make it more welcoming and give people a sense of pride</li><li>• More public seating</li></ul>		
---	---	--	--

Issue Identified	Community Comments	Potential Actions	ACTION TAKEN
<p><b>The need for cycle path(s) and cycle routes around the village has been expressed</b></p>	<ul style="list-style-type: none"> <li>• Designated cycle path to St Ives needed.</li> <li>• A good idea but will need a lot of thought to create safe cycle ways</li> <li>• Most folk cycle on footpaths, would be nice for young people to have somewhere safe to cycle</li> </ul>	<ul style="list-style-type: none"> <li>• Investigate the need for cycling in the village – are there any residents/established groups willing to take the lead on this?</li> </ul>	
	<ul style="list-style-type: none"> <li>• Cycle path necessary – Fluorescent vests needed for kids</li> <li>• Practice path around park would be good for beginners</li> <li>• A cycle path would be a good idea but there will be problems with funding and evidencing need</li> <li>• Need dedicated cycle paths and lanes</li> </ul>	<ul style="list-style-type: none"> <li>• Consider ways of promoting cycling as an activity in the village and the barriers to this. Could the school/youth club take the lead on promotion? Does the County Council have any resources which could be used? Link in to the Carnival cycling event.</li> </ul>	
	<ul style="list-style-type: none"> <li>• St. Ives and St. Ives via Colne (less hilly!)</li> <li>• To Chatteris and Earith using old rail track and in general</li> <li>• The present one needs to be advertised more</li> </ul>	<ul style="list-style-type: none"> <li>• Contact other Parish Councils to see if the need is a common one and if they are willing to work together on this issue.</li> </ul>	
	<ul style="list-style-type: none"> <li>• Off-road circular routes</li> <li>• Bike path to guided bus</li> <li>• Pidley Golf Club</li> </ul>	<ul style="list-style-type: none"> <li>• Funding issues – Too expensive in current financial climate</li> <li>• Contact Sustrans for advice</li> </ul>	

Issue Identified	Community Comments	Potential Actions	ACTION TAKEN
<b>The zebra crossing in the High Street is poorly sited and potentially dangerous to use</b>	<ul style="list-style-type: none"> <li>• High Street zebra crossing needs moving. CCC should watch how it is being used</li> <li>• We struggle to see the traffic when using the crossing because of the bends in the road</li> <li>• The zebra crossing is dangerous and should be moved or turned into a pelican crossing. It is too close to a four way junction and parked cars.</li> </ul>	<ul style="list-style-type: none"> <li>• Contact CCC Highways to investigate use of crossing and potential options for moving crossing</li> </ul>	CCC Highways say this is the only suitable location for the Zebra crossing on the High Street
		<ul style="list-style-type: none"> <li>• Investigate other ways of making the crossing safer in the short term</li> </ul>	A County Highways safety audit was completed and they were satisfied the crossing is acceptable.

Issue Identified	Community Comments	Potential Actions	ACTION TAKEN
<p><b>There is concern over dog mess on the Norwood Playing Field and other areas in the village.</b></p>	<ul style="list-style-type: none"> <li>• Keep dogs off playing fields</li> <li>• Name and shame offenders – many people can take photographs using their mobile phones and these can be posted on a website/notice board (could lead to victimisation of informers though)</li> </ul>	<ul style="list-style-type: none"> <li>• Norwood Playing Field Dog Exclusion Order in place as at 1 Dec 2011</li> </ul>	<p>The Dog Exclusion Order is working effectively &amp; it is self-policed by the community.</p>
	<ul style="list-style-type: none"> <li>• Name and shame!</li> <li>• Lake area is also affected, more publicity needed, animal welfare officer could visit schools and youth club</li> <li>• This is a problem but is difficult to enforce</li> <li>• All paths are a problem. Embarrass those that cause the problem.</li> <li>• A lot more control with on the spot fines if people caught and prosecution</li> <li>• More litter bins and Dog</li> </ul>	<ul style="list-style-type: none"> <li>• Investigate campaigns in other areas (e.g. Redditch) which have addressed this issue.</li> <li>• Keep Britain Tidy campaign 'Poo Fairy'</li> <li>• Arrange training / promotion campaign with Huntingdonshire District Council Animal Welfare Officer</li> </ul>	<p><b>Dog mess</b> – additional funding sought for bins &amp; new awareness signs posted at the LNR</p> <p>Somersham CP school has approached the parish council and it is keen to design &amp; display posters around the village as an awareness campaign. Somersham Parish Council has accepted the offer.</p> <p>Somersham4u had a full page on 'responsible dog ownership' with contributions from Huntingdonshire DC Animal Welfare Officer &amp; a dog behaviourist.</p>

	<p>mess bins should be provided</p> <ul style="list-style-type: none"> <li>• Pavements should be cleaned from dog mess and litter more regularly</li> <li>• Let dogs on the field again. There should be more 'PICKUP YOUR OWN MESS' signs around the different facilities in the village. All fines should go to Parish Council to be spent on village concerns. Perhaps there should be somebody who warden it.</li> </ul>	<ul style="list-style-type: none"> <li>• The public should be encouraged to report these issues</li> </ul>	
--	--	--	--

Issue Identified	Community Comments	Potential Actions	ACTION TAKEN	
<p><b>Ideas for improving the quality of the roads, parking and easing traffic congestion</b></p>	<p>Community comments to stop parking outside chip shop, some people</p>	<p>* Potential actions over illegal parking issues and develop an awareness and prevention plan</p>	ACTION TAKEN	
	<ul style="list-style-type: none"> <li>People parking in High St. Stop cars people parking outside chip shop, but parking if allowed needed than available to encourage less cars parking</li> <li>Speed limit reduced, 20mph zone in school area and down the High St</li> <li>There should be more to double</li> <li>Slow people along High St and outside of parking and remove</li> <li>Bring in signage to make it safer</li> <li>More off road parking should be made available along the High St. Perhaps a larger one for the part of the Tesco car park.</li> <li>Name and shame. Collect registrations, council to trace owners of cars and publicise</li> <li>Car park needs to be better signed or sign repositioned</li> </ul>	<ul style="list-style-type: none"> <li>Pursue speed reduction measures</li> </ul>		
	<ul style="list-style-type: none"> <li>* Investigate possibility of 'give way' signage on school/youth club running a 'proper parking' campaign</li> <li>* Contact school to request information to be distributed about safe parking and driving down Parkhall Rd</li> </ul>	3	Somersham Parish Council with Cambridgeshire CC through a joint funding bid have implemented a new 20 mph speed zone & pavement improvements along Parkhall Rd	
<p><b>Parking in the village centre is difficult and illegal parking is common in certain areas</b></p>	<ul style="list-style-type: none"> <li>Name and shame. Collect registrations, council to trace owners of cars and publicise</li> <li>Car park needs to be better signed or sign repositioned</li> </ul>	<ul style="list-style-type: none"> <li>* Investigate the feasibility of making Somersham more cycle friendly (separate issue later)</li> <li>* Develop a realistic parking plan for the village</li> </ul>	<p>A review was carried out in 2009 with Cambridgeshire Highways and revised Traffic Regulation Orders (TRO's) were implemented. A second review is being carried out by Somersham Parish Council during autumn/winter 2014/15</p>	



Issue Identified	Community Comments	Potential Actions	ACTION TAKEN
<b>Suggestions for improving the safety of the Village</b>	<ul style="list-style-type: none"> <li>• Police need to take more action</li> <li>• Lack of control by parents of young teenagers</li> <li>• Police and population working together, more police</li> <li>• Better streetlights</li> <li>• More for young people to do. Encourage young people to help/volunteer for maintenance</li> <li>• Less drug taking</li> <li>• CCTV</li> </ul>	<ul style="list-style-type: none"> <li>• Continue dialogue with police</li> <li>• Work with the youth club, schools &amp; neighbourhood schemes</li> <li>• Introduce a Respect Code?</li> </ul>	Planned programme to upgrade to LED street lights in 2015

Issue Identified	Community Comments	Potential Actions	ACTION PLAN
<p><b>Comments about the ease of travel to and from Somersham, including traffic issues</b></p>	<ul style="list-style-type: none"> <li>• Difficult getting through centre with parking in the way plus aggregate lorries coming through, maybe allow at more appropriate times and not at peak times.</li> <li>• Becoming more busier and dangerous in High St especially near Tesco's</li> <li>• Congestion High St and the Parkhall Rd / High St junction</li> <li>• Lower speed limit near the Windmill PH as cars pull out when others are going too fast</li> <li>• Zebra crossing needed on St. Ives Road to slow it down</li> <li>• Road condition beyond New Line Bridge (disused railway bridge at Parkhall Rd) is poor</li> <li>• Accurate and up-to-date info on road closures especially for Earith</li> <li>• Reduce use of private vehicles and get more frequent bus service</li> <li>• Need bus stop near The Pastures</li> <li>• More frequent public transport, no buses Sundays or bank holidays,</li> </ul>	<ul style="list-style-type: none"> <li>• Under review</li> <li>• Link to the website</li> </ul>	<p>New 40 mph area created on the approach to Somersham, St Ives Rd &amp; Pidley Rd</p> <p>The Time Bank could potentially organise outings as part of the 'preventing isolation' &amp; they already provide transport</p> <p>Reactive electronic bus time tables erected in 5 bus stop locations</p> <p>Up-to-date bus timetables made available in the library</p> <p>Library hosted a public transport review</p>

	<p>bus to Peterborough needed</p> <ul style="list-style-type: none"> <li>• More info regarding pickup points and timetables. Timetables need to be better, changed less and people told</li> <li>• Good guided bus service, runs at inconvenient times, cannot use for work to return for school run, doesn't return late enough</li> <li>• Better direct bus service to St. Ives, takes long time via public transport. More afternoon and evening buses from St. Ives to Somersham</li> <li>• Bus service poor, need car, unable to get to hospital via public transport</li> <li>• More direct bus service to St. Ives, Huntingdon and Cambridge to be at least every hour</li> <li>• Community transport arrangements need to be better advertised</li> </ul>	<ul style="list-style-type: none"> <li>• Approach the bus companies to discuss ways forward</li> <li>• Approach the bus companies to discuss ways forward</li> <li>• Public transport review in early 2014</li> </ul>	
--	---	---	--

Issue Identified	Community Comments	Potential Actions	ACTION TAKEN
<p><b>Concern about the condition and cleanliness of the pavements and roads around the village</b></p>	<ul style="list-style-type: none"> <li>• Make sure council resurfaces roads/paths properly.</li> <li>• Enhance paving around centre of village to make it more attractive</li> <li>• Make regular sweeping up of leaves, litter and dog mess where mechanical sweeper cannot reach especially in alleyways and around garage areas</li> <li>• Reduce /cutback trees and bushes that have encroached onto the pavement making it narrower e.g. Cranfield Place and The Trundle</li> <li>• Get road sweeper to start after 9am so it can get access to most areas in cul-de-sacs</li> </ul>	<ul style="list-style-type: none"> <li>• Continue on-going contact with County Highways and property owners</li> <li>• Send 6 monthly reminders to Huntingdonshire District Council to clean and maintain their areas around the housing estates</li> </ul>	<p>Somersham CP school Children’s council considering a dog mess awareness poster campaign</p>

## Economic Well-Being

Issue Identified	Community Comments	Potential Actions	ACTION TAKEN
<p><b>The village is pleased with its range of shops and is concerned that some may close in the future; there is particular concern over the importance of maintaining a village Post Office</b></p>	<ul style="list-style-type: none"> <li>• Many village around us would love to have the quality of shops we enjoy</li> <li>• We need to keep a Post Office in the village</li> <li>• Could be a better place for the Post Office, other options include one of the other shops, library (would increase library users?), Parish Council (last resort)</li> </ul>	<ul style="list-style-type: none"> <li>• Consider a ‘use it or lose it’ campaign and who could run it.</li> <li>• Last run in 2009 by Somersham Parish Council. Poor response from shop keepers.</li> </ul>	
	<ul style="list-style-type: none"> <li>• Post office to embrace internet shopping</li> <li>• Tesco's got planning without thought about the traffic, get rid of Tesco's.</li> <li>• Doctors, early morning appointments needed</li> <li>• Bring back recycle bin to get money for village</li> <li>• Promote use of local shops more and prevent large chains entering the village and driving others out</li> <li>• Attract more small businesses by helping to convert farm buildings and expand industrial area to create local jobs</li> <li>• A weekly farm market, maybe</li> </ul>	<ul style="list-style-type: none"> <li>• Meet with village shopkeepers to consider how they can promote their shops and what further services they could provide</li> <li>• Planning permission not required as the property was already a retail outlet.</li> <li>• Credits were paid to encourage re-cycling before glass bottles could go in the blue wheelie bins</li> </ul>	



	<p>organised by the allotment holders to sell their produce.</p>	<ul style="list-style-type: none"> <li>• Investigate the feasibility of a local market &amp; relevant licences</li> <li>• Approach allotment associations to sell excess produce?</li> </ul>	
--	--	--	--

Issue Identified	Community Comments	Potential Actions	ACTION PLAN
<p><b>Issues regarding the pubs within the village</b></p>	<ul style="list-style-type: none"> <li>• Need good quality village pub/restaurant not ones that are just for kids/drunks</li> <li>• Take responsibility for mess, rubbish and breakages outside their establishments</li> <li>• Desire for a family pub</li> </ul>	<ul style="list-style-type: none"> <li>• Commercial decisions</li> </ul>	

Issue Identified	Community Comments	Potential Actions	ACTION TAKEN
<p><b>Concerns over the installation of a wind farm within the parish (104 in favour, 47 against)</b></p>	<ul style="list-style-type: none"> <li>• 9 are not sure and need more information</li> <li>• Potential noise, location, shadow, 'eye-sore', outer boundary</li> <li>• Big cost, negligible benefits, not proven to be efficient or financially beneficial</li> </ul>	<ul style="list-style-type: none"> <li>• Feasibility study for a wind farm and alternative environmentally friendly energy sources</li> </ul>	
<p><b>Litter and broken glass outside the pubs and in other residents' garden</b></p>	<ul style="list-style-type: none"> <li>• As long as council tax does not rise to fund installations of environmental projects</li> <li>• Think more about how renewable energy can be used</li> </ul>		

## Social Well-Being





Issue Identified	Community Comments	Potential Actions	ACTION TAKEN
<p><b>Millennium Sports Facility</b></p> <p><b>The Library</b></p> <p><b>All village facilities</b></p>	<ul style="list-style-type: none"> <li>• More lights needed and notice board showing events e.g. Fixture list</li> <li>• Cleaner</li> <li>• Improve heating, extend, up-to-date computers, more seating, open in mornings, newer books</li> <li>• Local government to help fund library</li> <li>• Longer opening hours</li> <li>• Think about being more energy efficient and ways to save money</li> <li>• All facilities should be kept clean, tidy and welcoming giving a feel of safety.</li> </ul>	<ul style="list-style-type: none"> <li>• Inform Somersham Sports &amp; Leisure Association (SSLA) and request early feedback</li> <li>• Inform Friends of Somersham Library and request early feedback</li> <li>• Already part funded by parish council and supported by county council.</li> <li>• Work with all village facility providers</li> </ul>	<p><b>Millennium Sports Facility:</b> More notices including showing events have been displayed inside &amp; outside the facility</p> <p>Social media is being used as below:</p> <p><b>Website</b> ‘millennium-sports-somersham.co.uk</p> <p><b>Facebook</b> ‘somersham sprint’</p> <p>An Environmental Plan &amp; energy review has been undertaken &amp; actioned. This has led to improved energy efficiency &amp; cost savings</p> <p>Issues with cleaning have been rectified</p> <p><b>Library:</b> Computers upgraded in the library by FOSL &amp; supported by Cambridgeshire CC</p> <p>Free Wi-Fi available &amp; promoted through posters, notices, newsletters by FOSL &amp; supported by Cambridgeshire CC</p> <p>Increased book buying budget &amp; actively seeking recommendations from book champions &amp; customers by FOSL</p> <p>Complete refresh of junior non-fiction book stock and adult audio fiction by FOSL &amp;</p>

			<p>carnival donation</p> <p>Completed an energy audit, future replacement of lighting will use energy efficient version</p> <p>Library building is used by other groups for meetings</p> <p>Considered but unable to justify longer library opening hours</p> <p>Unable to extend or increase library seating at present due to funding</p> <p><b>General:</b> Planned bid for funds to install solar panels on community buildings</p>
--	--	--	---



Issue Identified	Community Comments	Potential Actions	ACTION TAKEN
<b>Somersham Town Football Club</b>  <b>The Scout Hut</b>	<ul style="list-style-type: none"> <li>• Would like to move to a bigger and more up-to-date facility</li> <li>• Structure needs updating</li> </ul>	<ul style="list-style-type: none"> <li>• Inform Somersham Town Football Club and request early feedback</li> <li>• Inform 1<sup>st</sup> Somersham Scout Group and request early feedback</li> </ul>	Proposals for the SSLA to meet the club & discuss the future  <b>Scout Committee:</b> confirmation in January 2014 they are looking to replace the scout hut as it is nearing the end of its useful life

Issue Identified	Community Comments	Potential Actions	ACTION TAKEN
<b>Use of the Churches in the village.</b>	<ul style="list-style-type: none"> <li>• For the Parish Church; improve kitchen and toilet facilities, extra help in Churchyard needed. More relaxed and modern approach.</li> <li>• For the Baptist Church; improve lighting and heating parish church - add toilet</li> </ul>	<ul style="list-style-type: none"> <li>• Inform St John the Baptist Church, Church Street and request early feedback</li> </ul>	Website details needed
		<ul style="list-style-type: none"> <li>• Inform the Baptist Church, High Street and request early feedback</li> </ul>	Website details needed



Issue Identified	Community Comments	Potential Actions	ACTION TAKEN
<p><b>Improvements to the quality of life of older people in the village</b></p> <ul style="list-style-type: none"> <li><b>Maintenance of existing village groups</b></li> </ul>	<ul style="list-style-type: none"> <li>'Grow' and encourage your new people so that they are confident to take on more responsibility in the future</li> <li>We've always asked for people to help and so far someone has turned up</li> <li>Will Time Bank be able to plug gaps?</li> <li>Every group struggles to get new leaders – promotion via newsletters, somersham4u etc.</li> <li>I really like the clubs for us 'oldies'</li> </ul>	<ul style="list-style-type: none"> <li>Work with existing groups to put in place plans for future leadership and funding</li> </ul>	<p>Increase activities between organisations through Time Bank e.g. Community Light Bite</p> <p>Promote organisational events through Time Bank</p> <p>Time Bank is happy to consult with people over social activities for various ages (if not already in existence, such as the Film Club)</p>
<ul style="list-style-type: none"> <li><b>Uneven and narrow pavements</b></li> </ul>	<ul style="list-style-type: none"> <li>Pavement on Feoffees Road has an adverse camber and is difficult for wheelchairs and to walk on</li> <li>Pavements in the housing estates are made with cars, not pedestrians in mind. They go up and down at</li> </ul>	<ul style="list-style-type: none"> <li>Encourage the use of all the different advertising methods in the village</li> <li>Assistance from library / schools for someone/group to support older people who run groups to use the internet</li> <li>Promote Time Bank</li> </ul>	

	<p>steep angles which are dangerous and awkward for pushchairs, people with dodgy hips and knees etc. and bad in the winter.</p> <ul style="list-style-type: none"> <li>• Pavements are too narrow for wheelchairs and mobility scooters</li> </ul>	<ul style="list-style-type: none"> <li>• Review dropped kerbs throughout the village</li> </ul>	
<ul style="list-style-type: none"> <li>• <b>Transport out of the village</b></li> </ul>	<ul style="list-style-type: none"> <li>• I don't get out of the village</li> <li>• I rely on my family for trips out</li> <li>• Can get a lift to the hospital</li> <li>• My family takes me out</li> <li>• Tesco's is a good thing as most elderly people can't get out of the village</li> </ul>	<ul style="list-style-type: none"> <li>• Establish what (if any transport schemes are provided)</li> <li>• Promote existing services</li> </ul>	
		<ul style="list-style-type: none"> <li>• Consider how to promote any existing schemes – groups, Windsor Court, Age Concern?</li> </ul>	
		<ul style="list-style-type: none"> <li>• Consult with older people to establish needs – groups to do this?</li> </ul>	
		<ul style="list-style-type: none"> <li>• Research existing transport schemes elsewhere: funding and organisation</li> </ul>	
		<ul style="list-style-type: none"> <li>• Option for Time Banking?</li> </ul>	<p>The Time Bank is willing to organise outings as part of the 'preventing isolation' &amp; already provide transport</p>
<ul style="list-style-type: none"> <li>• <b>Lack of an evening socialising venue (many see the</b></li> </ul>	<ul style="list-style-type: none"> <li>• Nowhere for older people to go and have a meal or drink in the evening</li> <li>• Lack of a decent pub that can be used by all ages</li> </ul>	<ul style="list-style-type: none"> <li>• Discuss this with pub landlords – is it possible to set aside dates/a night of the week which would be 'quieter' and more suitable</li> </ul>	

pubs as 'not for them')	<ul style="list-style-type: none"> <li>The pubs are not very attractive to us</li> <li>Somersham Football club will be opening its bar on Wednesday to view the Champions League football matches on TV</li> <li><i>NB – from the groups consultation most groups did not consider this a problem and thought there were plenty of places to meet, have a meal etc.</i></li> </ul>	for older people?	
		<ul style="list-style-type: none"> <li>Consider how to support a new venue – book meetings, hold groups there, and make it a joint venture with an established venue which is not currently in use in the evening?</li> </ul>	

Issue Identified	Community Comments	Potential Actions	ACTION TAKEN
<b>Additional facilities to add to the village</b>	<ul style="list-style-type: none"> <li>Swimming Pool (18), Fitness centre (5) and a leisure centre</li> <li>Public toilet (2)</li> <li>Cinema</li> <li>More disabled facilities and activities</li> <li>Activity centre for teenagers, Drama group (2), More for youngsters</li> <li>Monthly film night, Youth club, Faster broadband</li> <li>Adult learning classes to gain new skills</li> <li>Mother and baby groups (make sure they are advertised if there are some already), more baby/children's facilities</li> <li>Bank</li> <li>Men's club mid-afternoon selling no alcohol</li> <li>Christmas or Easter fair</li> <li>Re-introduce recycling facilities that</li> </ul>	<ul style="list-style-type: none"> <li>Prohibitively expensive</li> <li>Consider outdoor fitness equipment on the Norwood Playing Field</li> <li>Promotion of and introduction of activities/classes through Time Bank, the Community Information Centre etc.</li> <li>Source funding opportunities</li> </ul>	

	benefit the community		
--	-----------------------	--	--

Issue Identified	Community Comments	Potential Actions	ACTION TAKEN
<p><b>Suggestions for improving the communication of parish information and events</b></p>	<ul style="list-style-type: none"> <li>Information packs for newcomers available from library, put it in Village Scene</li> <li>More notice boards around village in main residential areas, Outside Schools, Shops, Parks, Lake and all other leisure facilities</li> <li>One big notice board at The Cross and make sure all notice boards are updated and with a high profile so people can see them (possibly electronic), Notice in doctors surgeries and library</li> <li>Advertise the existence of the websites</li> <li>More posters on street lamps/posts instead of relying on internet</li> <li>Event calendar on Somersham 4 u website. Display hard copy on notice boards</li> <li>Diary of events page in Voices and have a more regular publication, Births, baptism, marriages, deaths mentioned in Somersham4u. Include more info in Village Scene and somersham4u</li> </ul>	<ul style="list-style-type: none"> <li>Information/welcome pack. Potential to develop with the schools</li> <li>Community notice board on The Cross</li> <li>Display bus time tables. Consult with Stage Coach &amp; Whippet</li> <li>Consider all community suggestions and implement where possible. (Fly posting is not an option)</li> </ul>	<p>An information pack for 'old &amp; new' residents is currently being drafted by Somersham Parish Council. It will be available online and hard copies will be available in the library.</p> <p>The parish council has 6 notice boards at The Norwood Building, Springfields, outside Somersham CP School, outside Tesco, outside the library and St John the Baptist Church.</p> <p>A community notice board allowing free key access to all has been erected at The Cross. It was funded by the parish council &amp; the Feoffees Charity Committee.</p> <p><b>Somersham Parish Council</b> is increasing its use of social media using Facebook 'Our Somersham', Twitter #somershamparish &amp; its community website 'somersham4u.org</p> <p><b>Somersham Parish Council</b> uses its newsletter 'Somersham4u' to assist in</p>



	<ul style="list-style-type: none"> <li>• Monthly newsletter in shops and library</li> <li>• Notice in local shops, include up-to-date Parish Council minutes on website</li> <li>• Residents beyond New Line Bridge (Parkhall Road disused railway bridge) seem to be forgotten when giving info etc.</li> <li>• Deliver free info to Bishops Yard!</li> <li>• Brief monthly newsletter or full publication for people who voluntarily give their email address (saves paper) - 7 people liked this idea</li> <li>• Local papers/local directory, Remove parish notice from Tesco's wall and put in independent position</li> <li>• Employ a 'Town Crier'</li> <li>• Leaflets in doors</li> <li>• Official bus stop sign at The Cross</li> <li>• Less of a them and us feel (more relaxed approach), need to know more about councillors</li> </ul>	<ul style="list-style-type: none"> <li>• 'Spot light' on individual parish councillors on website &amp; in newsletter</li> </ul>	<p>disseminating news &amp; events in hardcopy by delivering a copy free to every household in the parish. An electronic copy is added to the councils website 'somersham-pc.gov.uk</p> <p><b>Somersham Time Bank</b> is also using social media and newsletters for promotion.</p> <p><b>Website:</b> somershamtimebank.org.uk</p> <p><b>Facebook:</b> 'somershamtb'</p> <p><b>Twitter</b> #somersham Time</p> <p><b>Event calendar:</b> it has been difficult to establish a successful event calendar online &amp; is still under development. There are still a number of people/organisers who are uncomfortable using social media therefore this is still under review.</p> <p><b>Publicise events/activities</b> using Somersham4u, notice boards, Facebook, Twitter, Cambridgeshire.net &amp; Shape your Place</p>
--	---	--	---

Issue Identified	Community Comments	Potential Actions	ACTION TAKEN
<b>Issues regarding the village run websites</b>	<ul style="list-style-type: none"> <li>• Somersham.org; dated, get email link working, don't use</li> <li>• somersham4u.org.uk; get email link working, don't use, would like to see more group information, review in somersham4u as to what this website provides</li> <li>• Facebook page; don't like Facebook, get email link working, don't use, review in Voices as to what this website provides</li> <li>• somershamvictoryhall.org.uk; review in somersham4u as to what this website provides</li> </ul>	<ul style="list-style-type: none"> <li>• CONTINUALLY REVIEW</li> </ul>	<p><b>Somersham Parish Council</b> has upgraded its website to 'somersham-pc.gov.uk'</p> <p>Parish council run social media is constantly under review</p> <p><b>Other community websites:</b></p> <p>Somershamvictoryhall.com</p> <p>Library social media?</p> <p>Churches social media?</p> <p><b>Community Face book pages</b></p> <p>Somersham Christmas Lights</p> <p>Somersham Library</p> <p>Somersham Sprint</p> <p>Somersham Time Bank</p>

Issue Identified	Community Comments	Potential Actions	ACTION TAKEN
<b>Suggested improvements for the Parish council</b>	<ul style="list-style-type: none"> <li>To be proactive and do things for the village - 124 people</li> <li>To keep to the minimum/basic parish needs – 33 people</li> <li>Find out what residents want the most first before going ahead. Always ask the public (vote) for large expenses to see if people really want it</li> <li>Council tax is already too high</li> <li>Encourage other organisations to be proactive</li> <li>Be forward thinking and creative</li> <li>Hear more from Councillors</li> </ul>	<ul style="list-style-type: none"> <li>CONTINUALLY REVIEW</li> <li>Referendums are expensive and councillors are elected to make decisions</li> <li>Encourage elections and public attendance at meetings</li> </ul>	<p>Somersham Parish Council uses noticeboards, social media and Somersham4u newsletter in an attempt to keep a high profile.</p> <p>All of this relies on the community to be proactive as well and read any information published.</p>

Issue Identified	Community Comments	Potential Actions	ACTION TAKEN
<b>Areas in Somersham people feel unsafe</b>	<ul style="list-style-type: none"> <li>Intimidating near the George's outside seating</li> <li>Passing by pubs in centre especially when dark, High St Saturday night and in summer months when more people are outside</li> <li>At the cross, around the lake, at Norwood playing field, Station Approach all at night/when it's dark</li> <li>Speeding vehicles, Cranfield Place (no street lights)</li> <li>Horse riding on roads</li> </ul>	<ul style="list-style-type: none"> <li>CONTINUALLY REVIEW</li> <li>Continue to liaise with Police</li> <li>Links with the road safety audit</li> </ul>	<p>These areas will be considered during the street lighting review &amp; LED upgrade in 2015</p>

	<ul style="list-style-type: none"> <li>• Uneven pavement Parkhall road</li> <li>• The fast and busy High St and on St. Ives Rd</li> <li>• Corner of High Street/Feoffees Road</li> <li>• Church and Parkhall Road (too dark)</li> <li>• Alleyway between doctors and Crane Close (at night), alley between The Paddock to Homestead and Homestead to Penn Way</li> <li>• Outside Bonnett's in the dark, Zebra crossing as some people do not slow down or stop</li> <li>• Victory Hall at night, near to New Line Bridge, Parkhall Rd at night</li> <li>• Somersham FC due to recent burglaries</li> </ul>		
--	--	--	--

Issue Identified	Community Comments	Potential Actions	ACTION TAKEN
<p><b>There is a desire for more activities and events for all in the village</b></p>	<ul style="list-style-type: none"> <li>• Co-ordinate activities by bringing like-minded groups together so they can share costs and resources.</li> <li>• More advertising of clubs, social events so whole community knows what is on offer and when</li> <li>• More charity events with proceeds going to local causes</li> <li>• Family friendly meeting place and place for mums to meet up for a chat</li> <li>• More activities for the 40 – 50's, more activities for all age groups to relax and feel comfortable. More for youngsters to get involved in rather than congregate around the public facilities</li> <li>• Support and encourage all local groups and encourage stale committees to be more proactive and vibrant</li> </ul>	<ul style="list-style-type: none"> <li>• CONTINUE TO REVIEW &amp; PROMOTE</li> <li>• Share feedback with local groups</li> </ul>	

Issue Identified	Community Comments	Potential Actions	ACTION TAKEN
<p><b>Top priorities for spending the council tax around the village</b></p>	<ul style="list-style-type: none"> <li>• Self-sufficiency – Looking after Somersham people, bus shelter at Windsor Court stop, improve village facilities, more for teenagers. Sustainable community, upkeep of public buildings, keep the village a safe and friendly place. Keep the good handyman</li> <li>• Speed humps and speed control, especially High St and King St</li> <li>• Upkeep of open areas, support for voluntary services e.g. Library, lake party, Community facilities.</li> <li>• Humorous anti-litter campaign</li> <li>• Sports facility e.g. 3g pitch and cycle paths</li> <li>• Low energy street lighting as well as more lighting in general.</li> <li>• Youth Projects and more for the young to keep them out of trouble</li> <li>• Should reduce precept to 2.5%, find efficient ways of finding what residents want then let them know of the cost implications</li> <li>• Lake lighting, level of water due to lack of rain</li> <li>• Leisure Facilities, clearing litter &amp; footpaths. Area between Shortlands &amp; Harvey Drive knee deep in leaves and cans, resurface uneven</li> </ul>	<ul style="list-style-type: none"> <li>• Somersham Parish Council to delegate work to the appropriate council working parties</li> </ul>	

	<p>footpaths and Parkhall road. Remove grass verge between 16 &amp; 26 Parkhall so easier to walk along footpath</p> <ul style="list-style-type: none"> <li>• Energy saving projects and public toilets, only things that are really needed and public should be consulted first</li> <li>• Improved security in the village, neighbourhood watch scheme. More police, focus more on anti-social behaviour, resident policeman</li> <li>• Community facilities for varied ages and interests, protecting rights and comforts of all age groups and organise more community events. Clubs for elderly people &amp; transport to and from destination</li> <li>• Litter and dog fouling prevention, anything to improve village life, remind people what areas Somersham PC can spend in</li> </ul>	<ul style="list-style-type: none"> <li>• Somersham Parish Council to delegate work to the appropriate council working parties</li> </ul>	<p>The grass verge has been removed along a section of Parkhall Road from Meridian Close to the primary school.</p> <p>A 20 mph speed limit zone has been implemented from Meridian Close along Parkhall Road &amp; over Newline Bridge.</p>
--	---	--	--



Issue Identified	Community Comments	Potential Actions	ACTION TAKEN
<b>Ideas and feedback regarding events in the village</b>	<ul style="list-style-type: none"> <li>• The 'carnival' has less stalls compared to previous years and needs a revamp</li> <li>• The 'community fair' limited public response, more for different ages, action day focused too much on young, unexciting, lack lustre</li> <li>• 'One day in Somersham' was worthwhile but pity not more people. A good idea but share outcome through other means other than follow-up event</li> <li>• 'Localism' has not heard anything about it since the event. Too political and too far from reality. Provided a 'start' but should be followed up with concrete plans, unexciting, lack lustre, 1 person not sure what it is and what impact it has had. The speakers were poor and uninformative. Events other than the carnival were not advertised.</li> </ul>	<ul style="list-style-type: none"> <li>• FEEDBACK TO THE VARIOUS GROUPS &amp; ORGANISATIONS</li> <li>• This Community Plan</li> <li>• Time Bank</li> <li>• Somersham4u website and newsletter</li> <li>• 'Our Somersham' on Facebook</li> <li>• Helping older people project</li> </ul>	



Issue Identified	Community Comments	Potential Actions	ACTION TAKEN
<p><b>There are a number of ideas regarding housing within the village</b></p>	<ul style="list-style-type: none"> <li>• Encourage house owners/developers to tidy up fronts of properties especially ones boarded up on High St near garage</li> <li>• Reduce new houses being built and Green belt being used. Unused houses should be used before new ones being built. If somebody has trouble buying/selling a house encourage a House Swap scheme</li> </ul>	<ul style="list-style-type: none"> <li>• KEEP UNDER REVIEW</li> <li>• Consider contacting Luminus Housing &amp; housing agents</li> <li>• No Green Belt in Huntingdonshire</li> </ul>	

**Breakdown of consultation**

**Photography:** 54 consulted including 25 young people

**Action evening:** 33 consulted including 6 young people

**Group and organisation evening:** 27 consulted, no young people

**Friends of Somersham visit:** 10 older people consulted, no young people

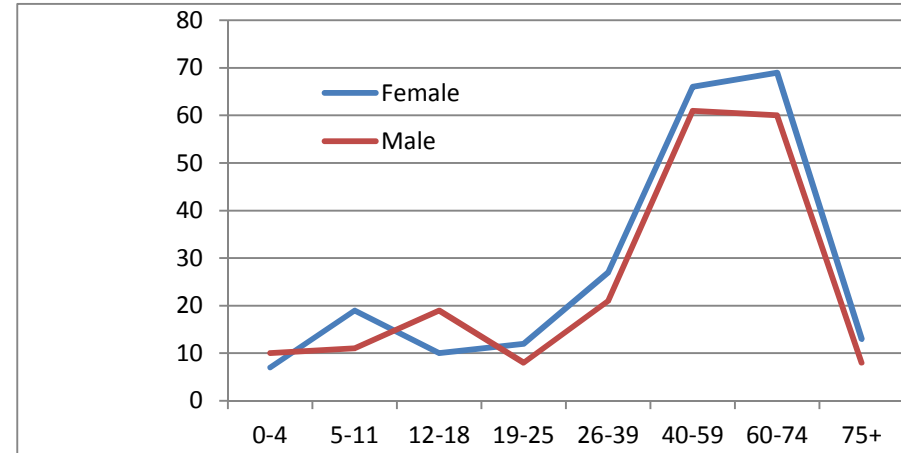
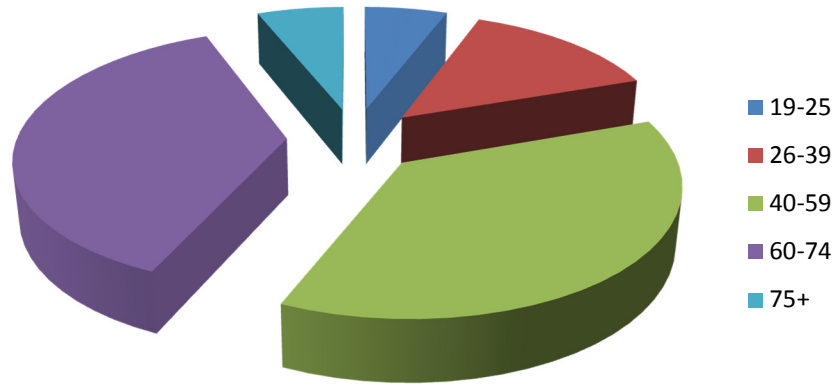
**Questionnaire for every household:** 223 female and 198 male responded, 76 Under-18, 68 19-39 year-olds, 256 40-74 year-olds and 21 over 75



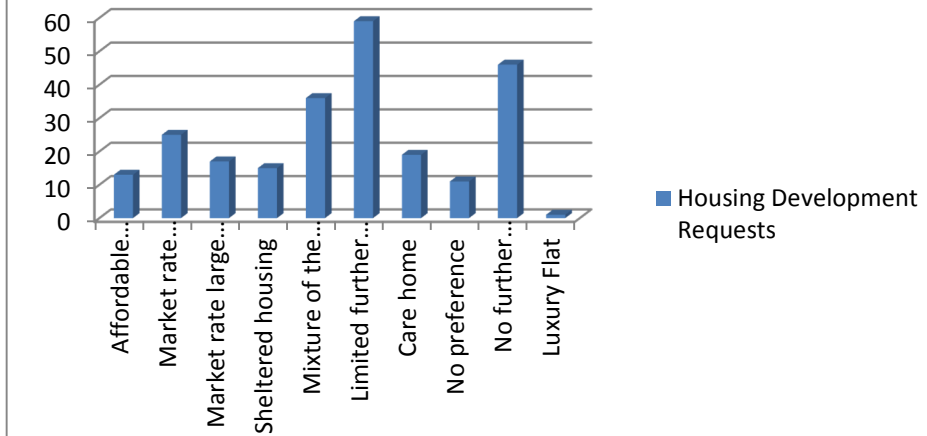
NESTA Making Innovation Flourish



### Age Of Person Completing Questionnaire



### Housing Development Requests



### Facility Usage

